



Voltage: ~220-240V, 50-60 HZ

Protection class: II IP20

Standards: See Technical Data Below

Description

LED Emergency Luminaire

The EXIDA ESSENCE OA 3W MANUAL TEST is a recessed LED emergency luminaire, with an Open Area distribution. The luminaire features articulated control gear for flexibility use in restricted ceiling voids.

The EXIDA IP65 PE lamphead contains an integrated LED indicator, 180mm wiring loom and recessed mounting brackets to make installation quick and simple, finish is available in white or black, please state on order. The EXIDA ES ND continues our range of LED Emergency luminaires designed to be effective and unobtrusive.

(W) WHITE LED Head Finish- 97-EXES OA ND W

(B) BLACK LED Head Finish- 97-EXES OA ND B

Product Image

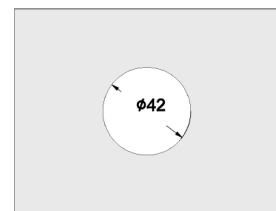
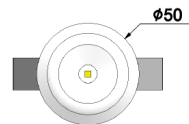
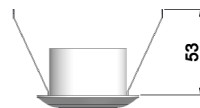


Technical Data

Supply Voltage/Frequency	230VAC / 50-60Hz
Ceiling cutout size/min void height	42mm Dia / 110mm void
Supply Current (Max) / Battery Type	30mA max / 2.4V 4Ah NiMH
Total Circuit Power Nom (Max)	2.0W (3.5W)
Power Factor	0.44
Ambient Temperature (ta)	10°C To +35°C
Ingress Protection	IP20
Weight	590g
Conductor Size	0.2-1.5mm² max
Luminous Flux	123lm
CCT	>5500K
Emergency Duration	3 Hours
Recharge Period	24 Hrs
Lens Distribution	Open Area
Manual Test	Yes, used in conjunction with key test switch
DALI Test	No
Relevant Standards	EN 60598-2-22 EN 61347-1 EN 61347-2-7 EN55015 EN 61000-3-2 EN 61547

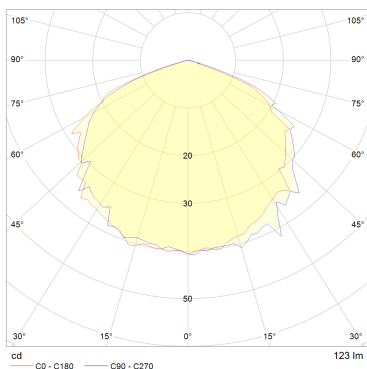
Drawing / Dimensions

Dimens. [mm]		
L	W	H
50 Dia	-	53



CUTOUT SIZE

Polar Distribution:



Spacing information

Open-Area (based on min. 0.5 lux)

Mounting Height (m)	Distance Luminaire to Luminaire (m)	Distance Luminaire to wall (m)
2.0	7.5	2.97
2.5	8.24	3.09
3.0	8.56	3.11
3.5	8.82	3.04
4.0	8.76	2.85